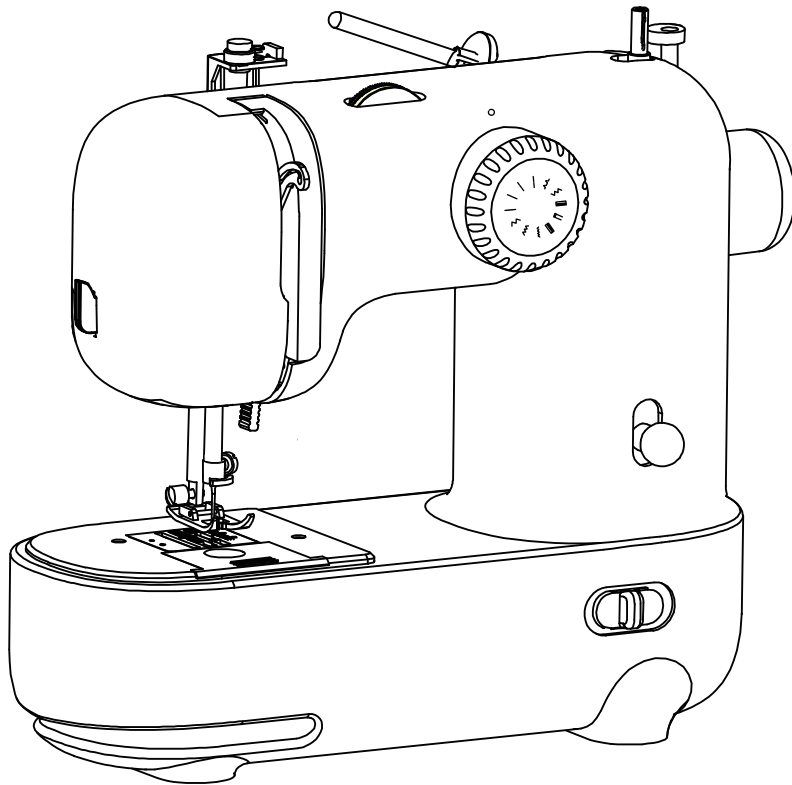




butterfly

Instruction manual

M21/M21A Pro Household Multifunctional Sewing Machine



Version: HD2023214



Overview/Safety Instructions	1
1. Device part.....	3
2. Power switch/plug/machine specifications.....	4
3. Foot control	5
4. Needle guard and mobile phone holder.....	6
5. Sewing pattern selection.....	7
6. speed adjustment switch.....	7
7. Function and removal of the presser foot.....	8
8. Use of the winder.....	10
9. Bobbin thread installation.....	11
10. Threading the machine.....	12
11. Draw up bottom thread.....	14
12. Sewing.....	15
13. Reverse sewing.....	15
14. Upper thread tension adjustment.....	16
15. Selection of thread and needle.....	16
16. Change the sewing direction.....	17
17. Sewing method of thick material.....	17
18. Blind seam sewing method.....	17
19. Buttonhole sewing method.....	18
20. Sewing of cuffs and pant legs.....	19
21. Replace the needle.....	20
22. Daily maintenance.....	20
23. Faults and solutions.....	21

Overview

Thank you for buying the Butterfly household multipurpose sewing machine; before using the machine, please read the manual carefully to operate various functions correctly; after reading this manual, please keep it properly for future reference!

Safety Notice

Please read these safety instructions before using the machine.



To avoid the danger of electric shock.

1 Please be sure to pull the power plug of the machine from the power socket after using the machine, cleaning the machine, performing any user maintenance adjustment operation mentioned in this manual or when the machine is unattended.

WARNING -To avoid the risk of fire, electric shock or personal injury.

2 When adjusting the mechanical part mentioned in this manual, please be sure to pull out the power cord plug of the machine from the power socket.

- To unplug the machine, turn the main switch to the symbol "O" to turn off the machine, then hold the power plug part to unplug it from the power outlet. Do not pull on the power cord.
- Be sure to insert the power plug directly into the power socket. Do not use the drag board to connect the power supply.
- If the power is cut off, be sure to unplug the machine.

3 Electrical Hazard :

- The unit should be connected to an AC power source within the range indicated on the nameplate. Do not connect to DC power or frequency converter. If you are unsure of your power source type, please contact a professional electrical technician.

4 Do not continue to use the machine when the power cord or plug is broken, the machine is not working properly, has been dropped or damaged, or the machine has been splashed with water. Please take the machine to the nearest authorized dealer or authorized repair point for professional maintenance or electrical or mechanical adjustment.

- When storing or using the machine, if you notice any abnormality such as odor, heat, discoloration or deformation, immediately stop using the machine and unplug the power cord.
- When unpacking and transporting the machine, be sure to carry it with a portable handle. Lifting the machine from another position may damage the machine or cause the machine to fall off, which may cause personal injury.

5 Please be sure to keep your work area clean:

- Do not block any air vents when operating the machine. Make sure the unit's vents and foot controllers are free of any buildup of flying down, dust or rags.
- Do not let any foreign matter fall into the opening of the machine. or insert foreign matter into any opening.
- Do not use the machine in locations where aerosols are used or where oxygen is stored.
- Do not use the machine near heat sources such as stoves or irons; otherwise, the machine, power cord, or sewn clothing may ignite, resulting in a fire or electric shock.
- Do not place the device on an uneven surface, such as an unstable or tilted table; otherwise, the device may fall off and personal injury may occur.

6 Special attention should be paid when sewing:

- Be sure to pay attention to the needle. Do not use bent or damaged needles.
- Do not touch any moving parts with your fingers. Be especially careful near the needle.
- When making any adjustments to the needle, switch the sewing machine to the symbol "O" position to turn it off
- Do not use a damaged or incorrect needle plate, as this will cause the needle to break.
- Do not push or pull the fabric while embroidering.

7 Do not use this unit as a toy:

- Always supervise children when using the unit or when there are children nearby.
- Keep children away from the plastic bags provided with the machine and dispose of them indiscriminately. Do not let children play with plastic bags, there is a risk of suffocation.
- Do not use outdoors.

8 Considerations for extending service life:

- Keep the machine away from direct sunlight or high humidity. Do not use or store the machine near indoor heaters, irons, halogen lamps or other hot objects.
- Use only neutral soap or detergent when cleaning the shell. Benzene, diluents and washing powder may damage the machine, do not use.
- When replacing or installing any components, pins, pins or other parts, please refer to this instruction manual to ensure proper installation.

9 Repair or adjustment matters needing attention:

- If the lamp is damaged, it must be replaced by an authorized dealer or an authorized repair shop.
- When the unit malfunctions or needs to be adjusted, firstly, please refer to the troubleshooting table at the end of the instruction manual to check and adjust by yourself. If you cannot solve the problem by yourself, please consult the sales agent or technical service center at the time of purchase.

10 Environmental requirements:

- Please dispose of the waste oil and other wastes produced in the process according to the local environmental protection requirements.
- Please use in the voltage and environment required by the manual, which has extended the service life of the product and reduced the generation of waste.
- After the machine is scrapped, please do not dispose of this machine and its accessories as ordinary household waste, please obey the local laws and regulations for the disposal of this device and its accessories, and support recycling.

Use this unit only for the purpose specified in this manual.

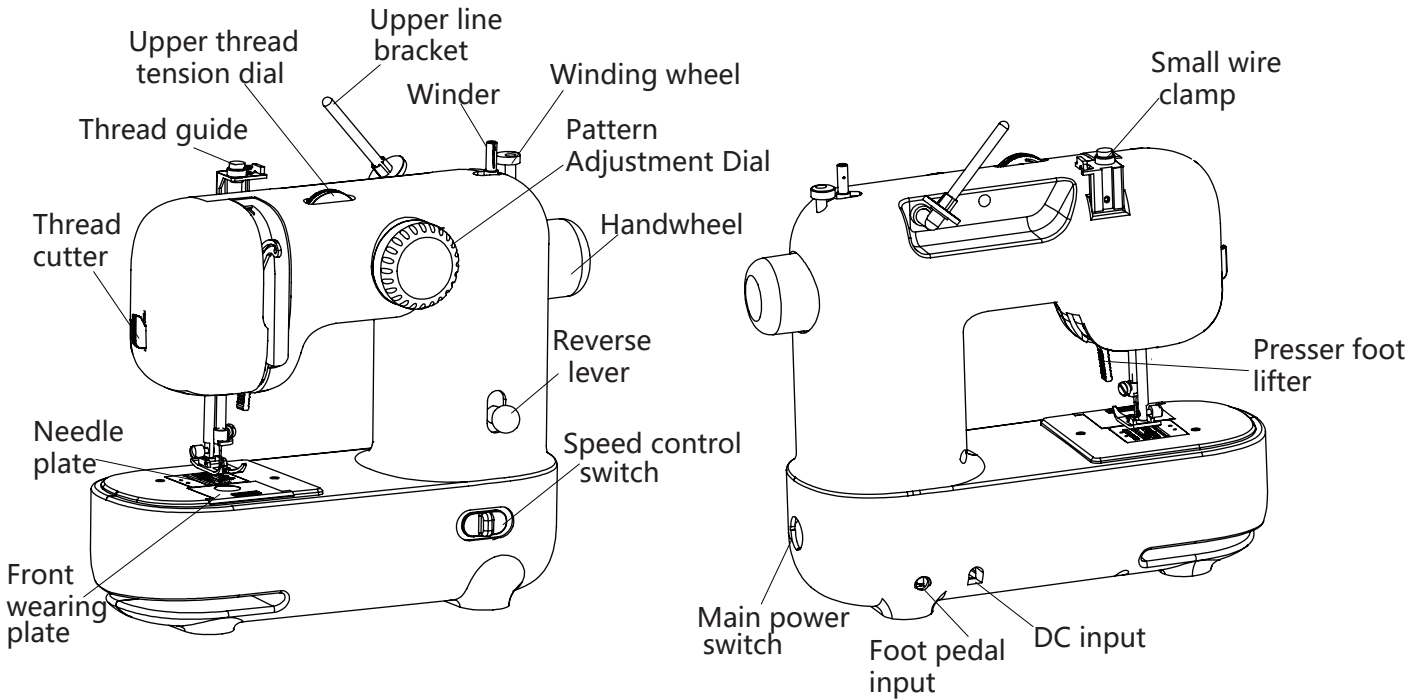
Only use accessories recommended by the manufacturer in this manual.

The contents of this manual and the specifications of this product are subject to change without notice.

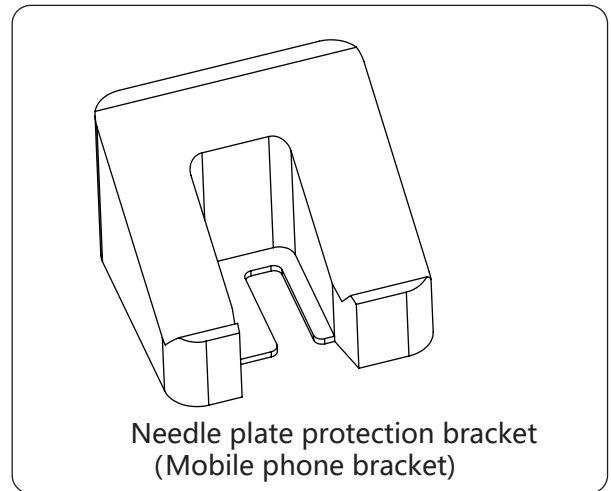
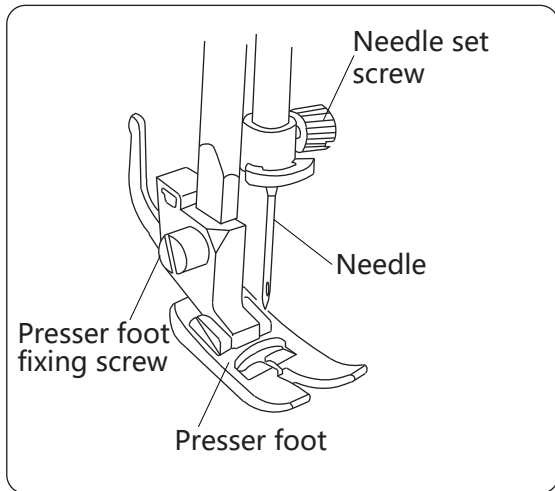
For more detailed product information or upgrades, please visit our website.

<https://butterfly-sewing.com>

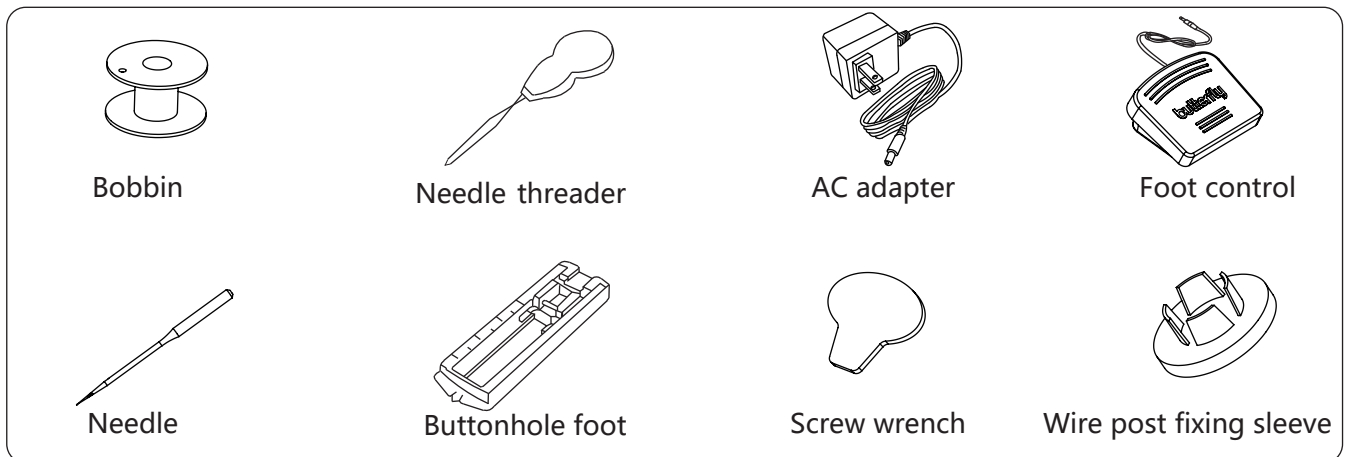
1. Main parts and accessories name



1.1 Sewing parts



1.2 attachment



2. Power switch/plug/machine specifications

2.1 Power switch/plug



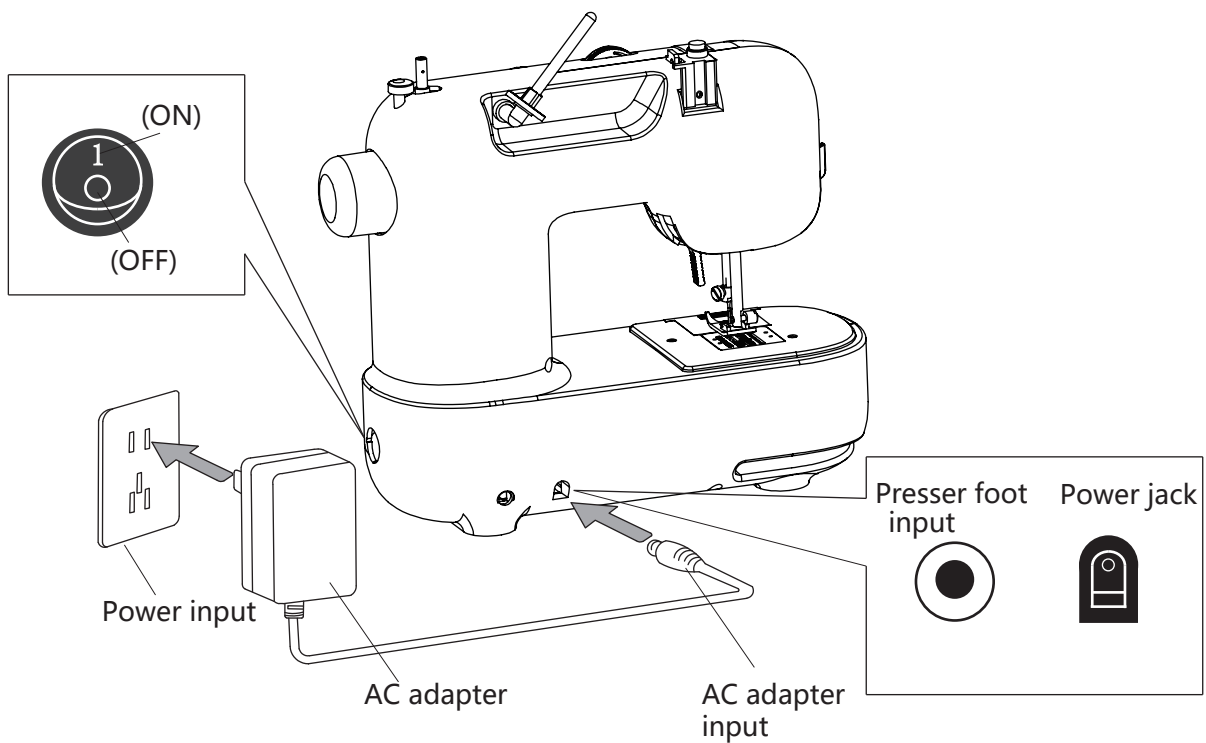
Warn!


- ★ If the AC adapter power cable is ruptured, replace it with a new one. Otherwise, it will cause electric leakage or machine fire.



Attention!

- ★ Place the machine in a horizontal position and keep the powers witch OFF.
- ★ When turning the power switch to the ON/OFF state (ON), make sure that your hands, etc. are not around the needle plate or the needle.



2.1 Insert the AC adapter plug into  power jack.

2.2 Insert the plug of the AC adapter into the 220V power socket to ensure that the AC adapter is powered on.

2.3 Then turn ON the power switch (ON) to "1".

2.2 Machine specification parameters

Input power	AC100~240V 50/60H 0.3mA	Needle	Home Needle (HA X1)
Output power	DC 6V 1.2A	Heavy	2.1KG
Power	9W	Overall dimensions	310mm X 270mm X120mm

3. Foot control



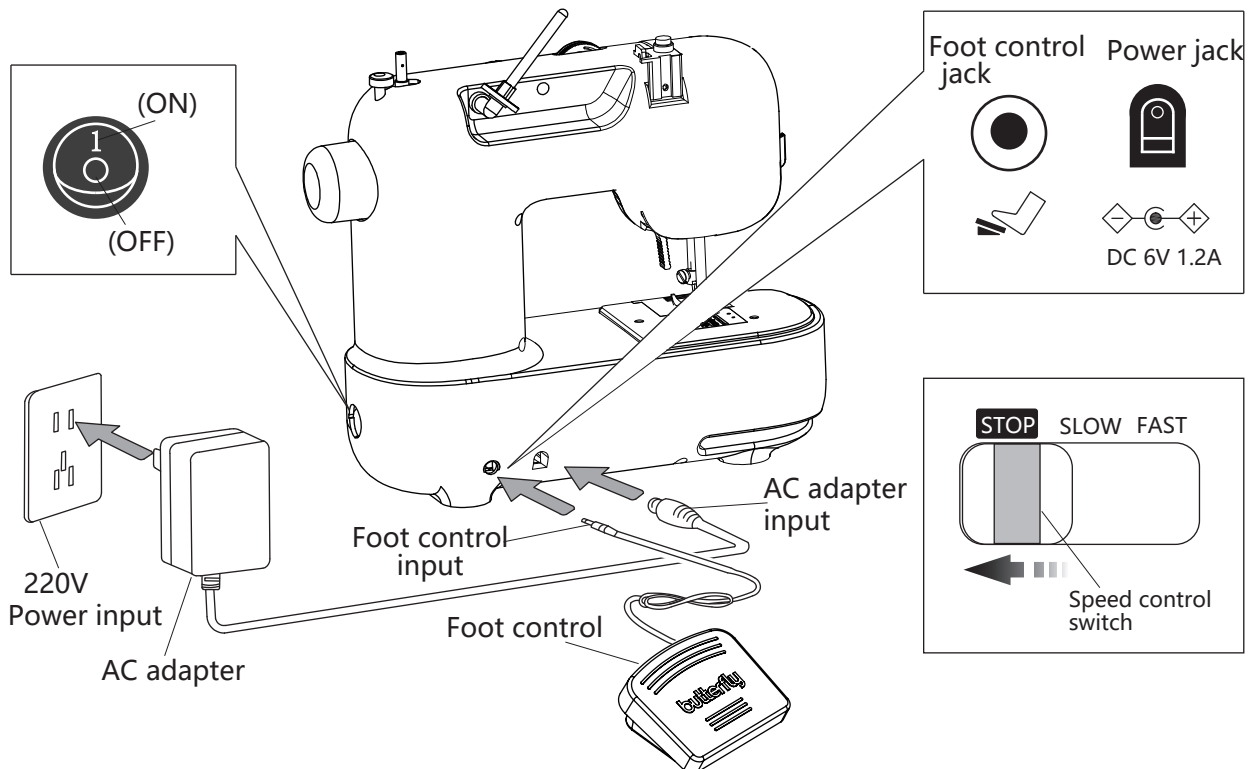
Warn!

- ★ If the AC adapter power cable is ruptured, replace it with a new one. Otherwise, it will cause electric leakage or machine fire.



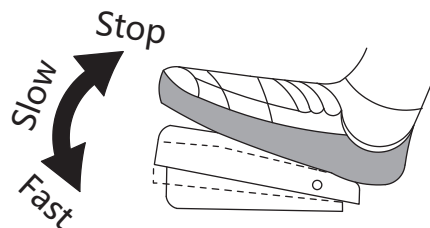
Attention!

- ★ Place the machine in a horizontal position and keep the power switch OFF.
- ★ When turning the power switch to the ON/OFF state (ON), make sure that your hands, etc. are not around the needle plate or the needle.



- 2.1 Press the "power switch" on the "0" side, the power is turned off.
- 2.2 Insert the "foot control plug" into the corresponding jack in the picture above; insert the "AC adapter plug" into the corresponding jack in the picture above.
- 2.3 Insert the "AC adapter" into the "220V power socket", then press the "power switch" at "1", the power is turned on.
- 2.4 Turn the "speed adjustment switch" to the "STOP" position, and use the "foot switch" to operate; the specific sewing speed and slowness are shown in the following figure:
Press the foot switch with the foot down, the sewing speed will display different speeds according to the different positions of the foot, the faster the lower the speed; the slower the speed in the middle; the sewin speed can be switched according to the different pressing force.

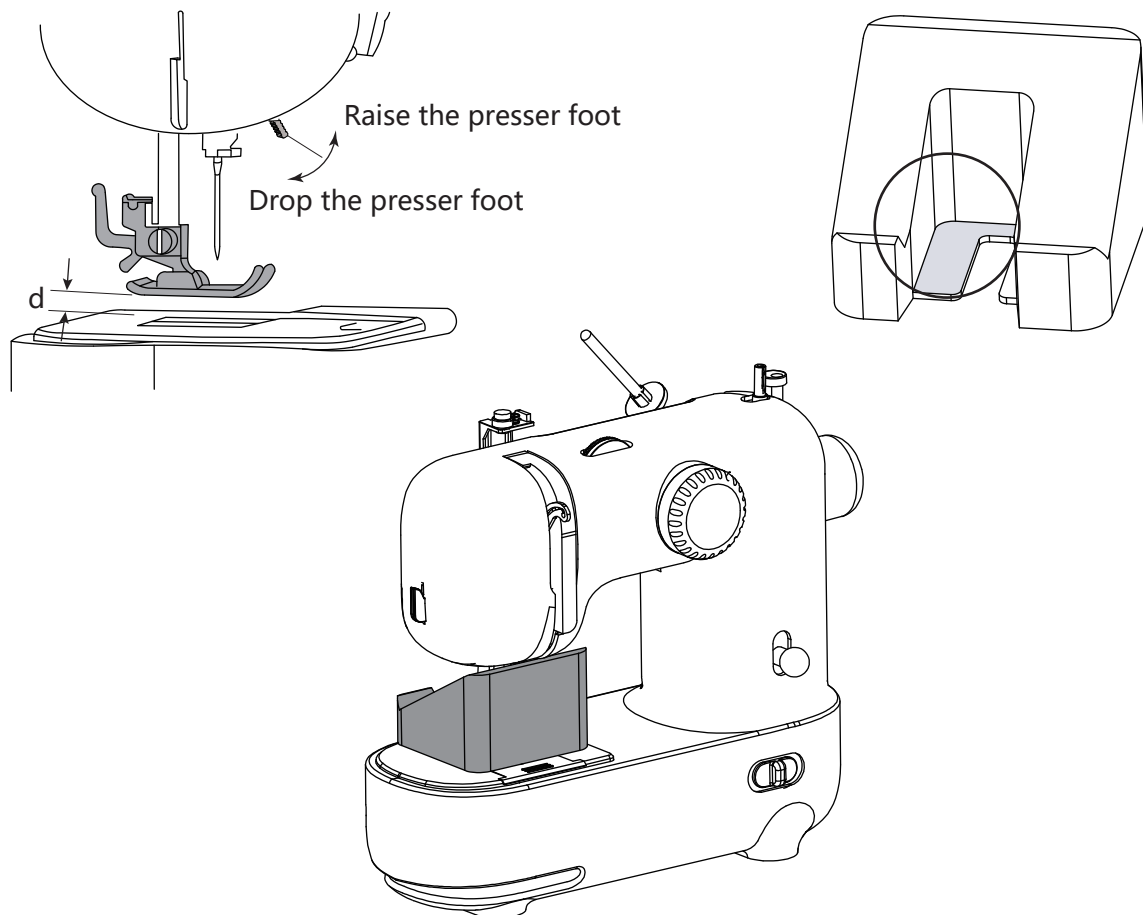
- ★ Step on foot control and the machine will start.
- ★ Step on the pedal lightly, the sewing speed of the machine is slow.
- ★ Step on the pedal deeply, the sewing speed of the machine is faster.
- ★ Stop stepping on the pedal, the sewing machine will stop.



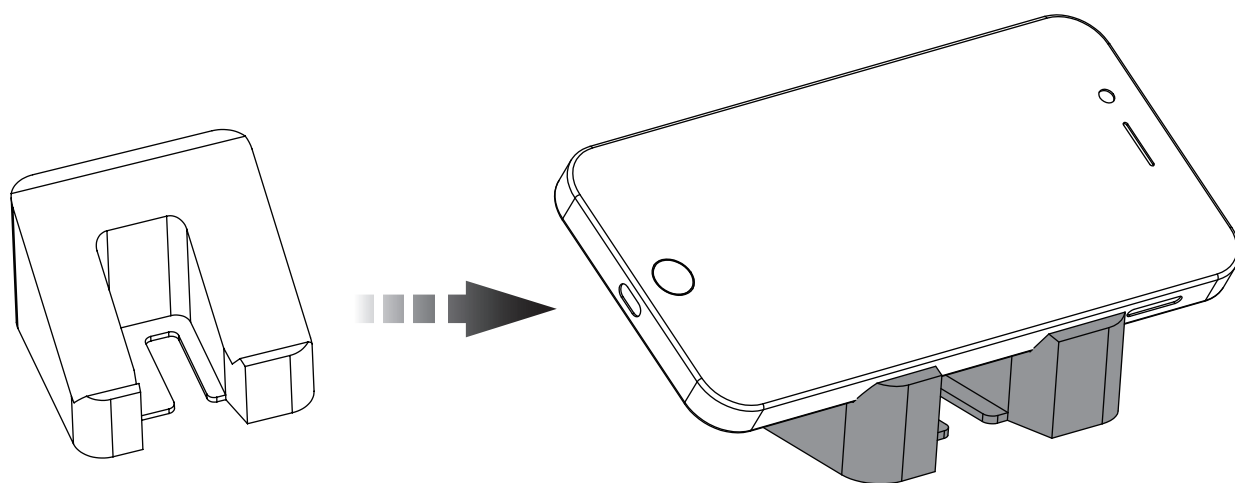
4. Needle guard/mobile phone bracket

4.1 When the machine is not in use, you can put the needle guard in front of the needle to prevent children from touching the needle and accidentally hurting their hands. The specific installation method is as follows:

- ★ First pull the "presser foot lifter" to lift the presser foot, and ensure that the presser foot and the needle plate have a certain distance.
- ★ Then insert the "needle guard" under the presser foot, then pull the "presser foot wrench" to lower the presser foot and press it on the "needle guard".



4.2 When the machine is not in use or is being used, the needle guard can be used as a mobile phone holder, which is convenient for placing mobile phones. As shown below.

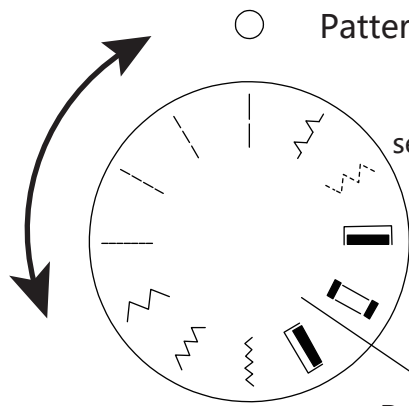


5. Selection of sewing patterns



Attention!

1. Please pay attention to the needle to avoid bumping your hands.
2. When the machine is sewing, do not switch patterns.



Pattern selection position

Select the pattern according to your own needs and turn the "pattern selection dial". Rotate the "desired pattern" to align with the position above.

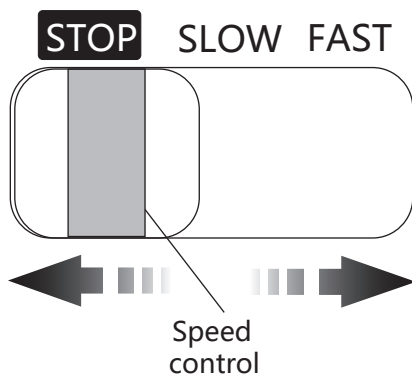
Note:

When rotating the pattern selection dial, make sure that the needle is at the highest point.

Pattern selection dial

Pattern display							
Model	Straight stitch		Zigzag stitch		Buttonhole	dotted zigzag	fold side
	large stitches	off-center stitch	big sawtooth	small sawtooth			
	Oversized stitches	small stitches	medium sawtooth				
Purpose	Ordinary sewing		Package edge		Buttonhole	splicing	Blind

6. Use of the speed adjustment switch

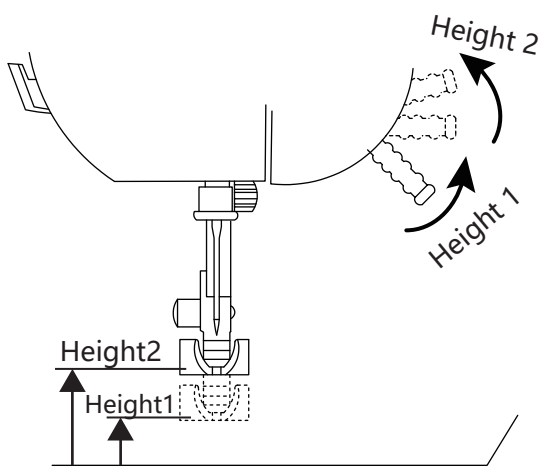


Turn the speed adjustment switch to the "SLOW" or "FAST" position; The machine will run and start sewing.

- ★ Turn the speed adjustment switch to "SLOW" (slow speed), the machine will sew at a slow speed, it is recommended to use it when sewing thick materials.
- ★ Turn the speed adjustment switch to "FAST", the machine will sew quickly, it is recommended to use it when sewing thin materials
- ★ Turn the speed adjustment switch to "STOP" and the machine will stop sewing.
- ★ When using the foot switch, the speed adjustment switch needs to be adjusted to the "STOP" state; the running speed of the machine is controlled by the foot position.

7. Presser foot function and loading and unloading

7.1 Using the presser foot function

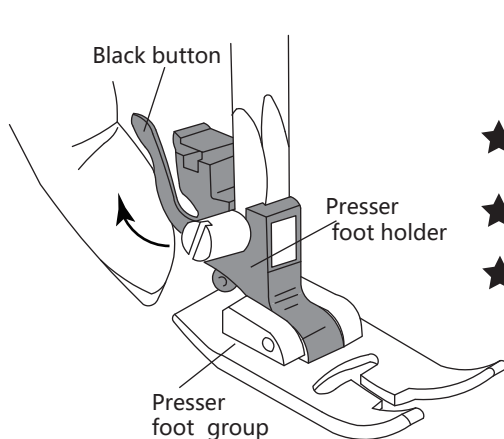


Attention!

When operating, please pay attention to the needle to avoid bruising your hands.

- ★ You can move the "Presser Foot Lever" up to lift the presser foot, the machine has 2 height gears.
- ★ When sewing the fabric, the thickness of the fabric should not be higher than the thickness of "Height 1".
- ★ When sewing fabrics, please lower the presser foot before sewing.

7.2 Removing the presser foot set

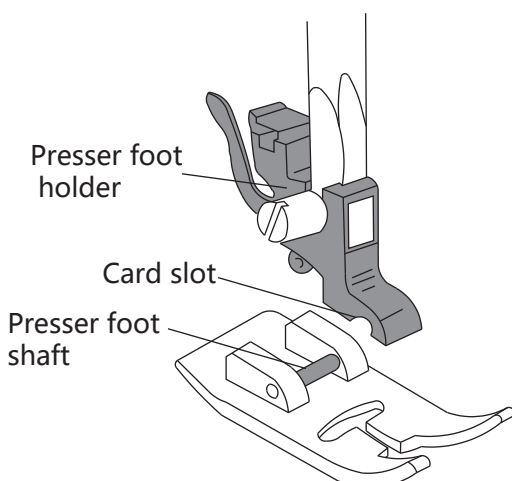


Attention!

1.To do this, you need to set the power switch to "off" first
2.When operating, please pay attention to the needle to avoid bruising your hands.

- ★ Turn the handwheel counterclockwise first so that the needle is at the highest position.
- ★ Pull the "press foot lever" to raise the press foot group.
- ★ Press the "black button" on the rear of the foot holder, and the "presser foot holder" will be separated from the "presser foot group".

7.3 Installation of presser foot group



Attention!

1.To do this, you need to set the power switch to "off" first
2.When operating, please pay attention to the needle to avoid bruising your hands.

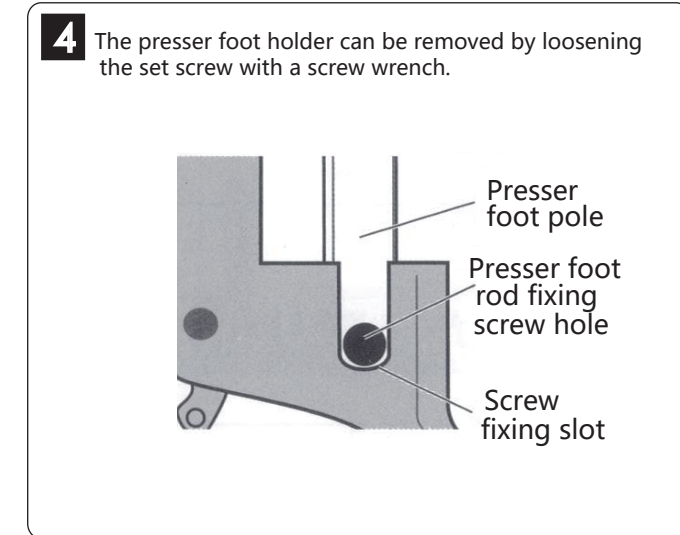
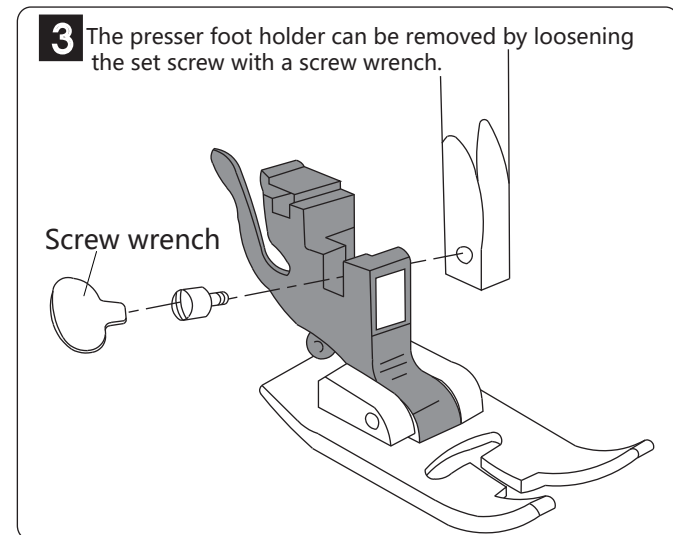
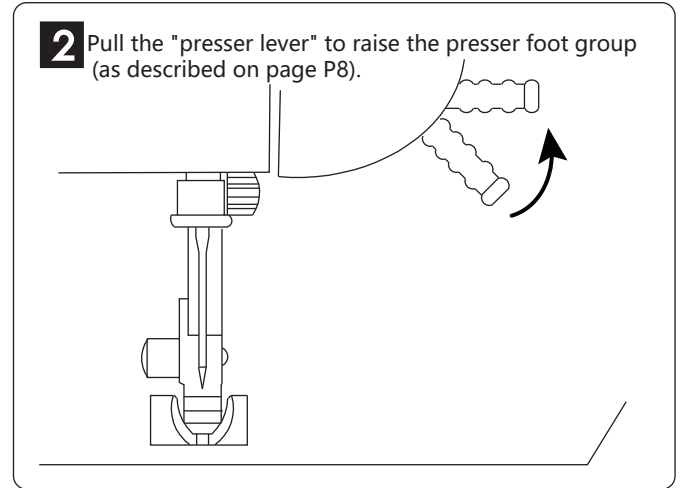
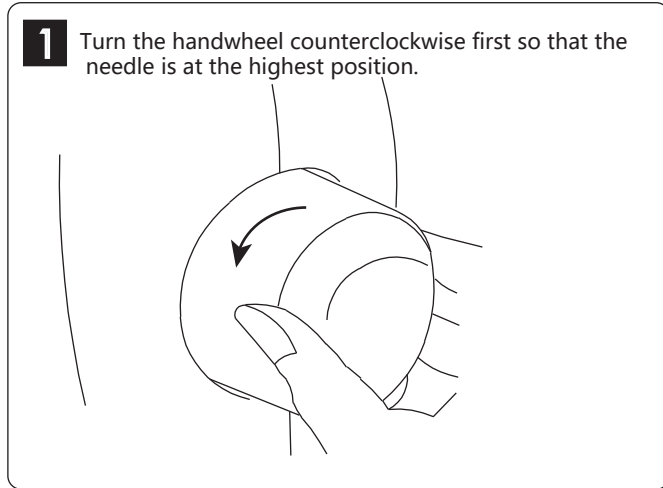
- ★ This operation also requires keeping the needle in the highest position.
- ★ The presser foot support is in the raised position (according to 6.1).
- ★ Select the desired presser foot set, align the "presser foot shaft" with the bracket slot, and position the presser foot.
- ★ Slowly lower the presser foot lever so that the presser foot shaft fits into the bracket slot to complete the installation.

7.4 Presser Foot Holder Removal and Installation



Attention !

- 1.To do this, you need to set the power switch to "off" first.
- 2.When operating, please pay attention to the needle to avoid bruising your hands.

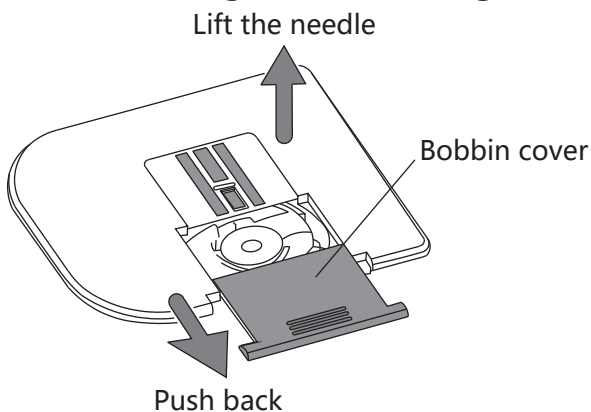


7.5 Removing and installing the bobbin



Attention !

- 1.To do this, you need to set the power switch to "off" first.
- 2.When operating, please pay attention to the needle to avoid bruising your hands.



★ Turn the handwheel clockwise first so that the needle is in the highest position.

★ Push the "Bobbin cover" back.

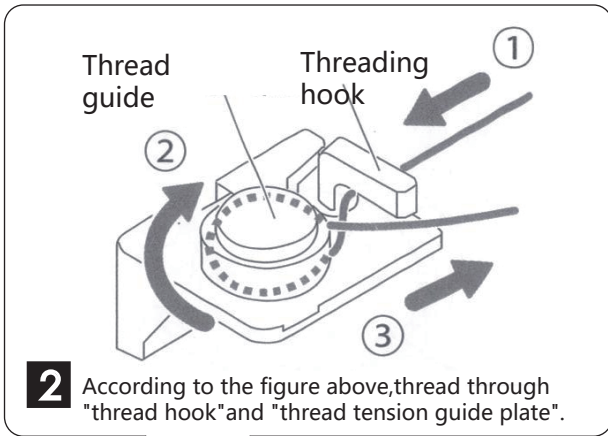
★ Remove the bobbin cover and use your fingers to take out the bobbin.

8. Use of the winder

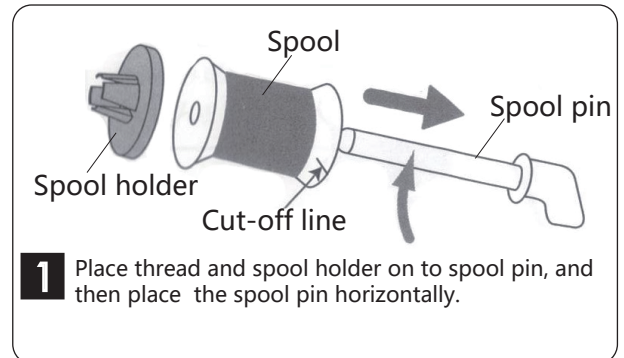


Attention !

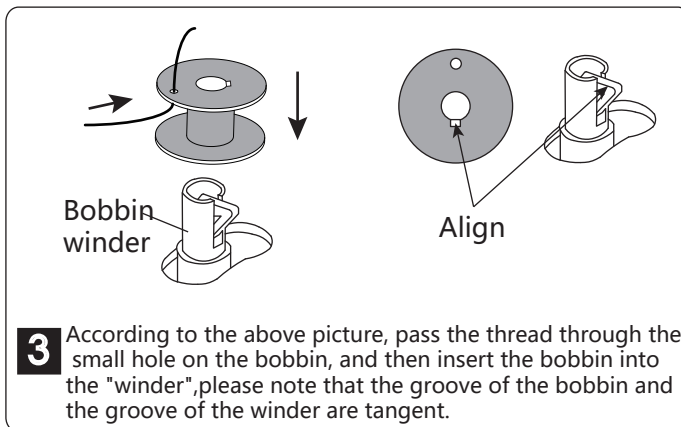
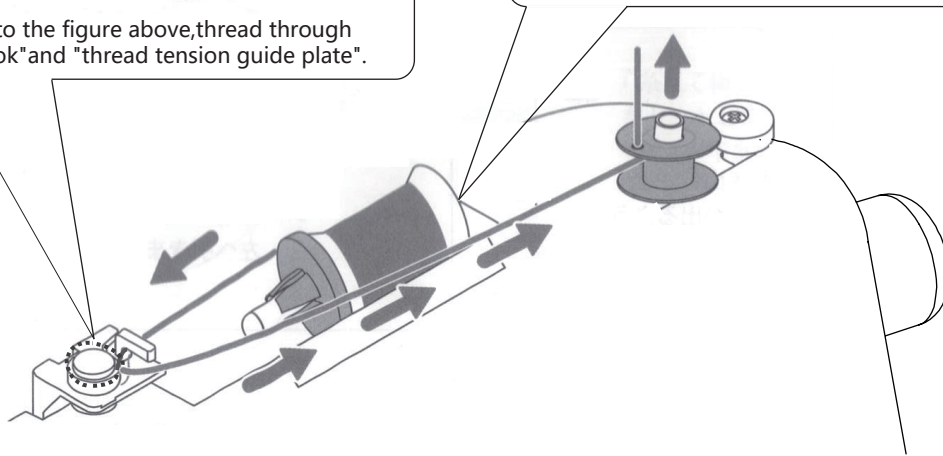
1. To do this, you need to set the power switch to "off" first.
2. When operating, please pay attention to the needle to avoid bruising your hands.



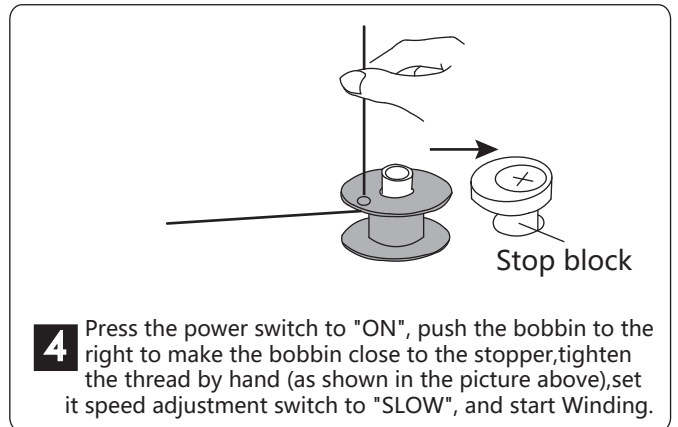
- 2** According to the figure above, thread through "thread hook" and "thread tension guide plate".



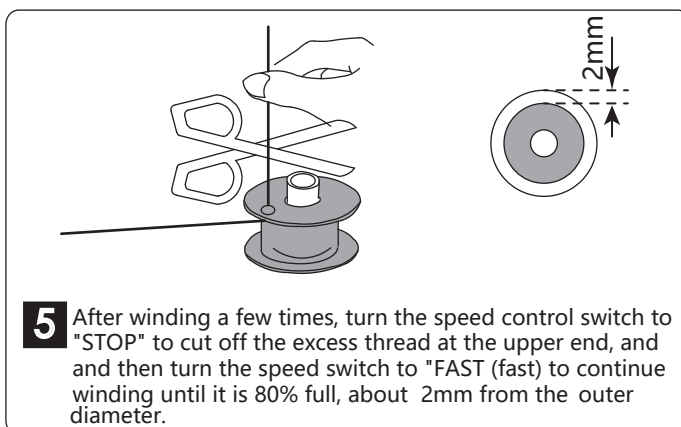
- 1** Place thread and spool holder on to spool pin, and then place the spool pin horizontally.



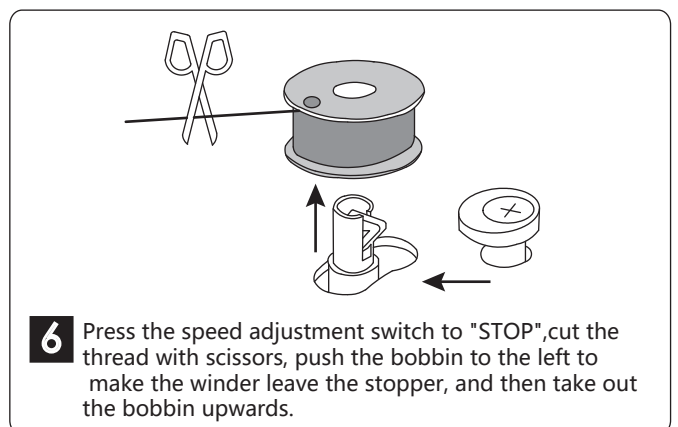
- 3** According to the above picture, pass the thread through the small hole on the bobbin, and then insert the bobbin into the "winder", please note that the groove of the bobbin and the groove of the winder are tangent.



- 4** Press the power switch to "ON", push the bobbin to the right to make the bobbin close to the stopper, tighten the thread by hand (as shown in the picture above), set its speed adjustment switch to "SLOW", and start Winding.



- 5** After winding a few times, turn the speed control switch to "STOP" to cut off the excess thread at the upper end, and then turn the speed switch to "FAST (fast)" to continue winding until it is 80% full, about 2mm from the outer diameter.



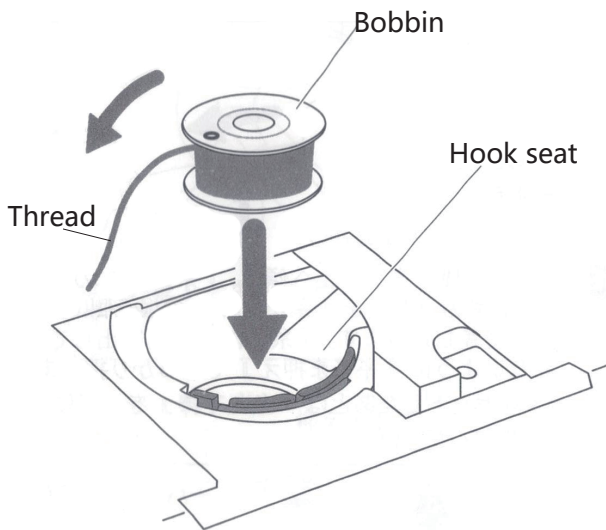
- 6** Press the speed adjustment switch to "STOP", cut the thread with scissors, push the bobbin to the left to make the winder leave the stopper, and then take out the bobbin upwards.

9. Installation of the lower thread bobbin



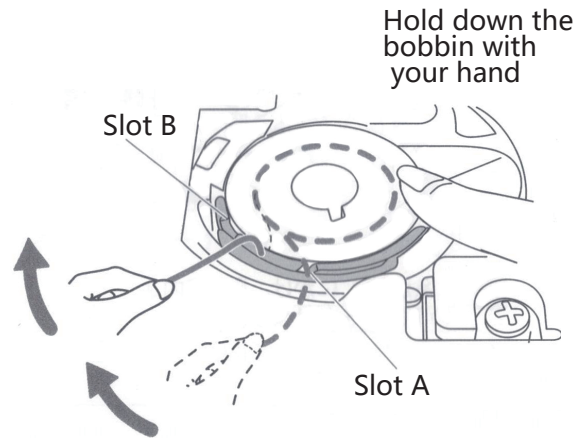
Attention !

- 1.To do this, you need to set the power switch to "off" first.
- 2.When operating, please pay attention to the needle to avoid bruising your hands .



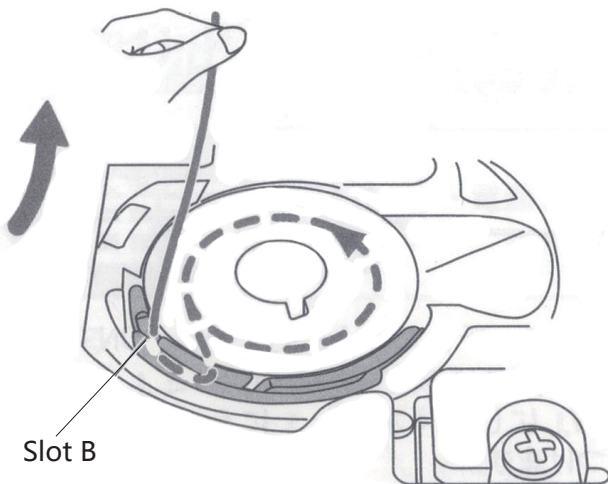
1

Open the front cover and hold the bobbin with your right hand so that the end of the wire is on the left. As shown in the figure above; Place the bobbin in the bobbin holder.



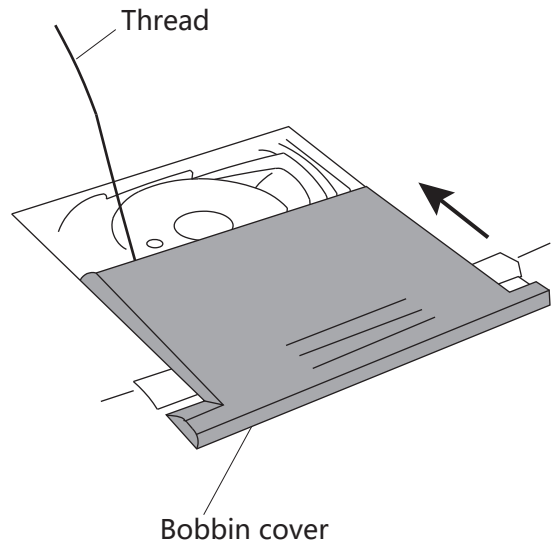
2

Press the bobbin with your right hand, pull the line around the protrusion with your left hand, and gently pull the bottom line out of the line slot.



3

Make sure the bobbin is free to rotate counterclockwise in the bobbin holder through the wire slot. Then pull the line out in the direction shown above.



4

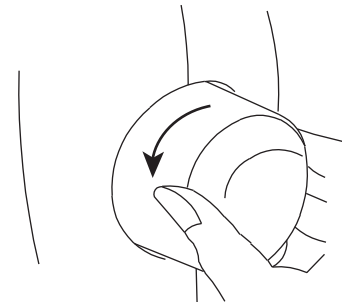
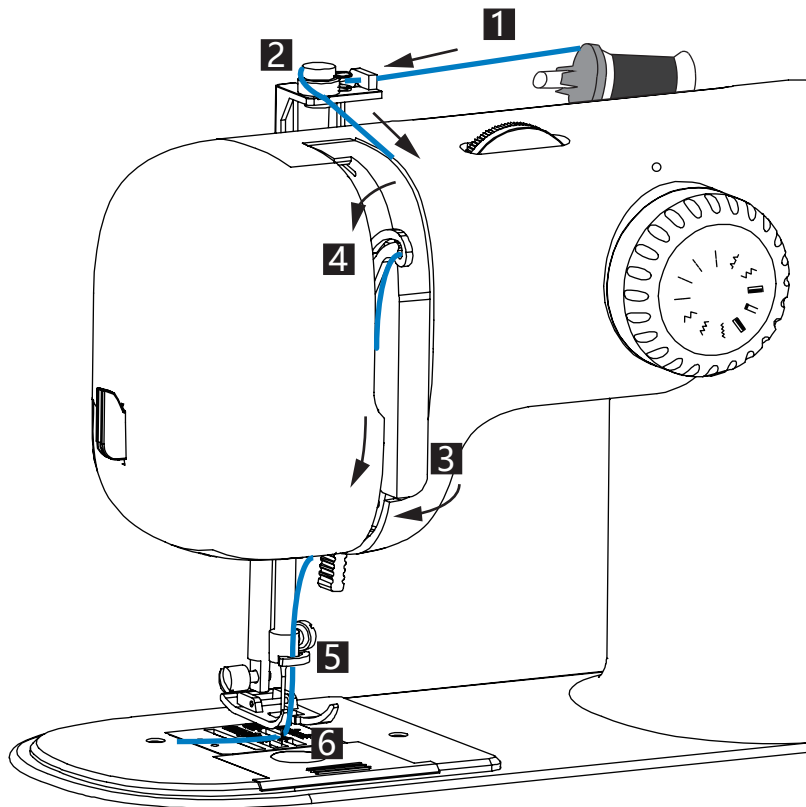
After confirming the installation, push the Bobbin cover forward and cover it well.

10. Threading the machine

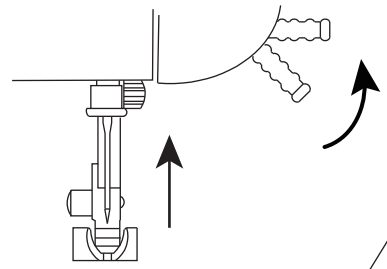


Attention !

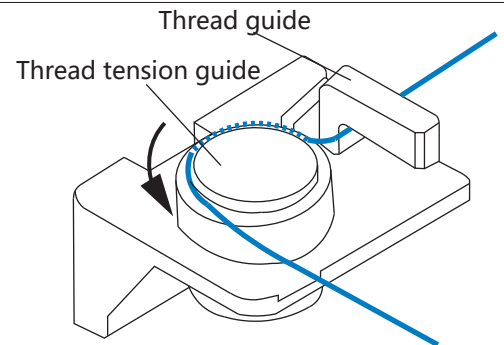
1. To do this, you need to set the power switch to "off" first.
2. When operating, please pay attention to the needle to avoid bruising your hands.



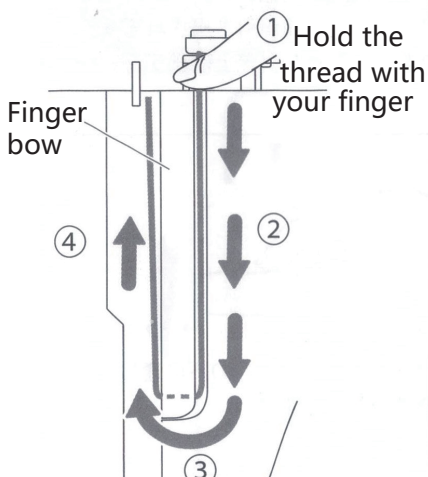
1. Turn the handwheel counterclockwise first to make the needle at the highest position.



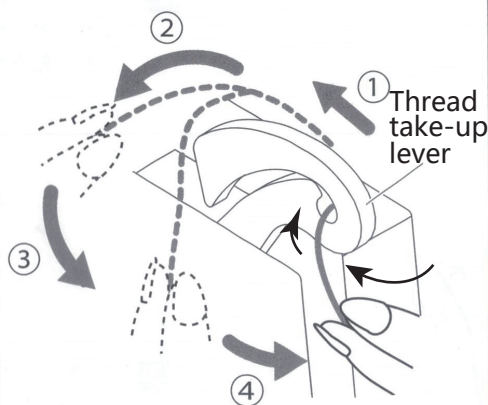
2. Raise the "presser foot lifter" to raise the presser foot (according to the instructions on page P8).



3. Place thread and spool holder on to spool pin (see in page P10), and then pass the thread through thread guide and pulling thread through thread tension guide.

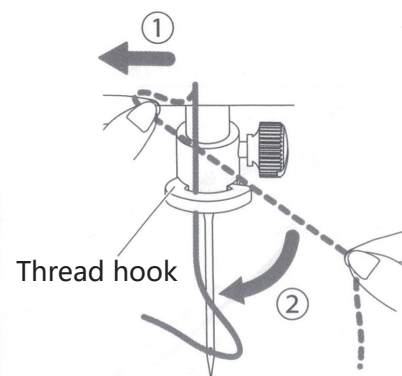


4. Hold the thread with your hand, and follow the instructions in the picture above to bypass the finger protector and pull down first, and then pull up.



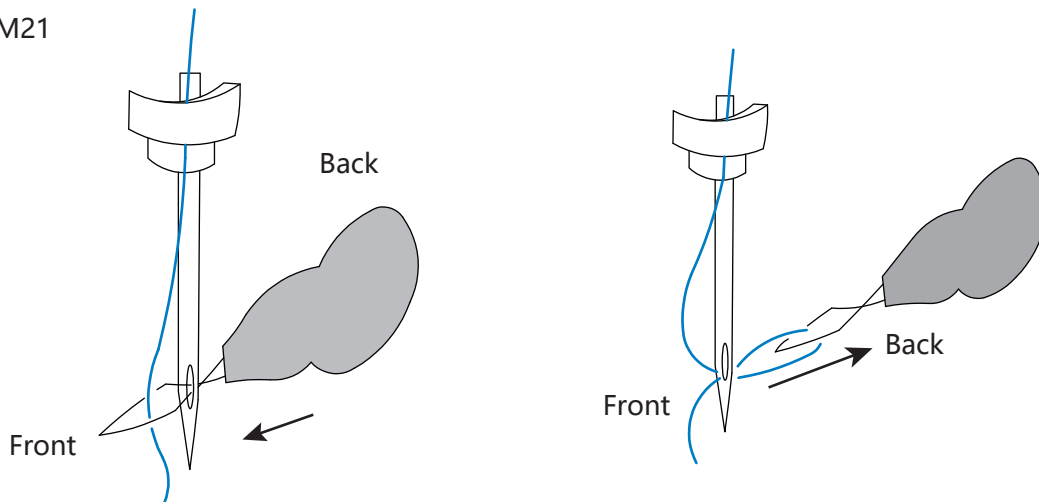
5. Pass the thread through the thread take-up lever from right to left, and thread the thread as shown in Figures 1 to 4.

★ For M21



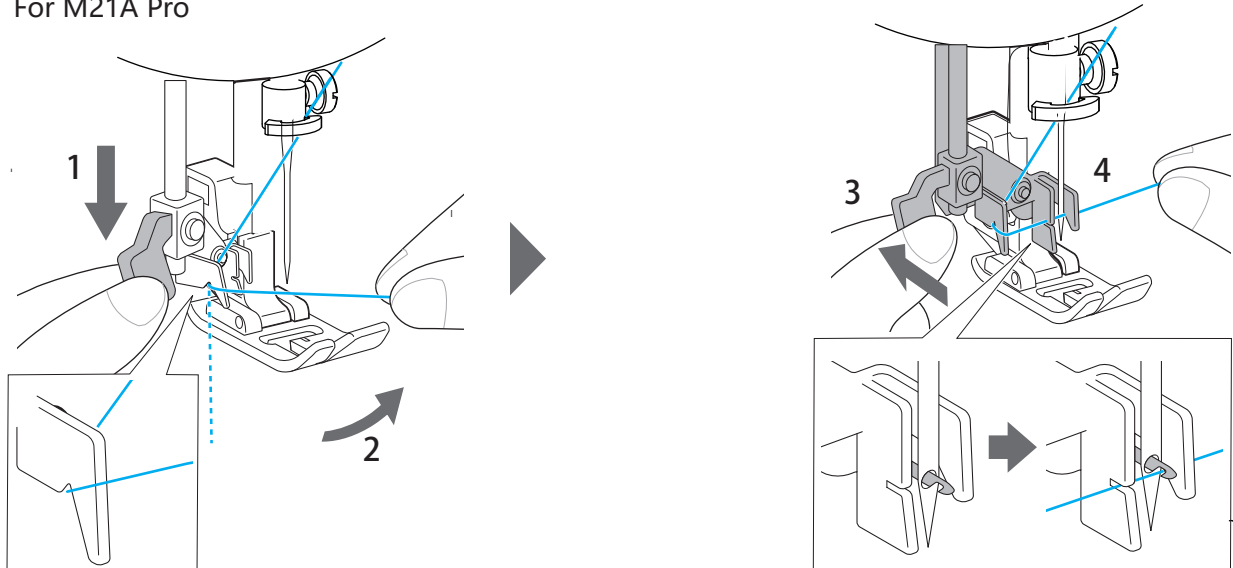
6. Hold the thread with your left hand first, and then pass the thread through the thread hook on the needle bar with your right hand.

★ For M21

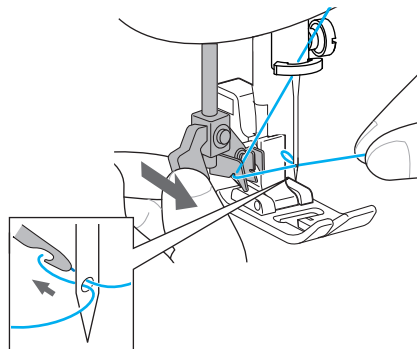


7. Insert from the back of the pinhole with a threading device; The threading device will draw the thread from the front side of the pinhole (the front side of the sewing machine) to the back side of the pinhole (the back side of the sewing machine).

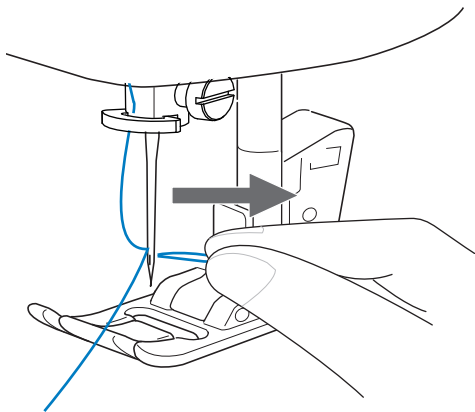
★ For M21A Pro



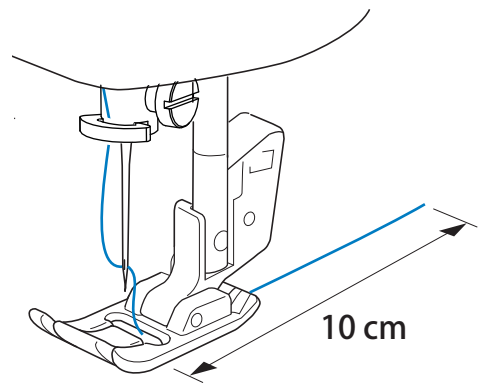
1. While lowering the needle threader leverfully (1), hook the thread onto the guide(2). Next, push back the needle threader lever until it stops (3), and pass the thread in front of the needle. Make sure that the thread is under the hook that has come through the eye of the needle and the hook catches the thread(4).



2. Return the needle threader lever to the front slowly, and then release the lever slowly.



3. Raise the presser foot lever.



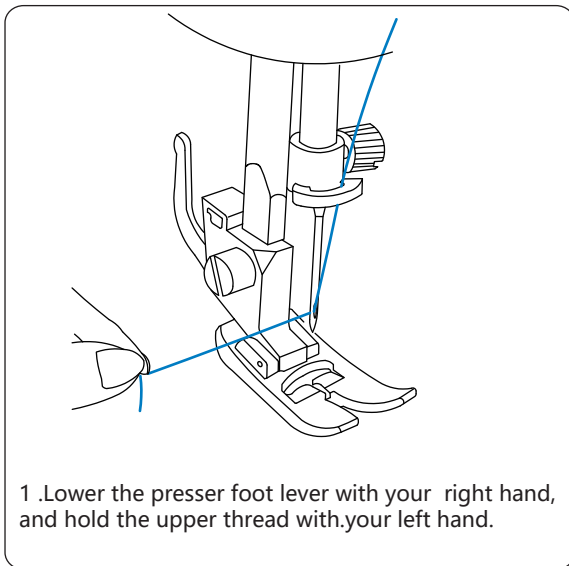
4. Pull the loop of the thread, and pass the end of the thread as illustrated below.

11. Draw up bottom line

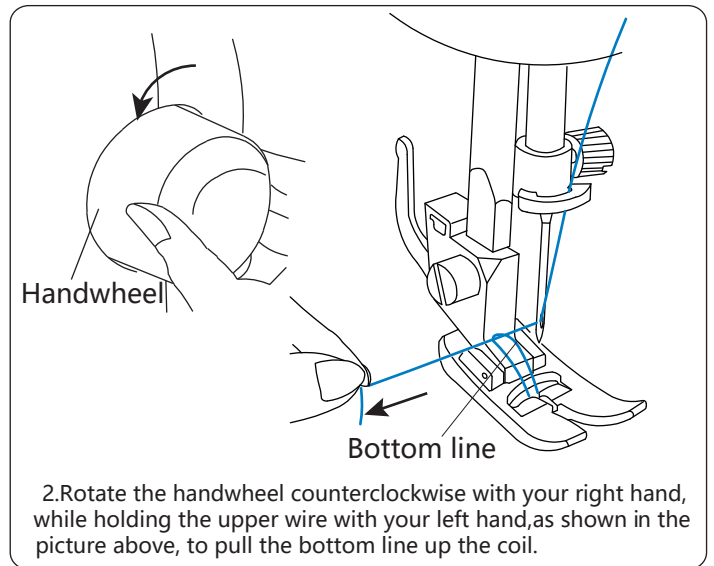


Attention !

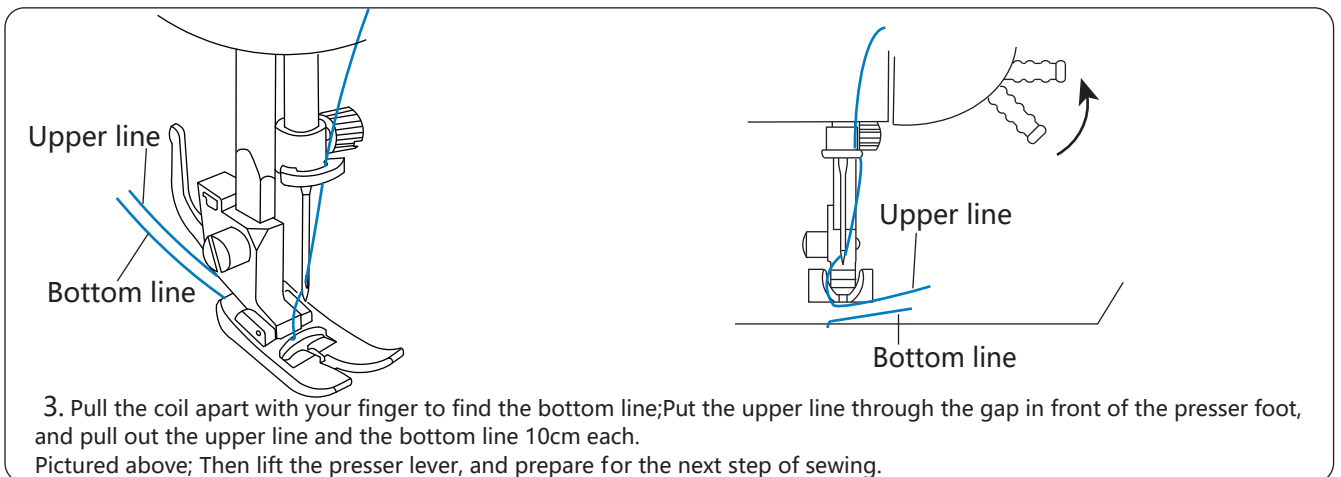
1. To do this, you need to set the power switch to "off" first.
2. When operating, please pay attention to the needle to avoid bruising your hands.



1. Lower the presser foot lever with your right hand, and hold the upper thread with your left hand.



2. Rotate the handwheel counterclockwise with your right hand, while holding the upper wire with your left hand, as shown in the picture above, to pull the bottom line up the coil.



3. Pull the coil apart with your finger to find the bottom line; Put the upper line through the gap in front of the presser foot, and pull out the upper line and the bottom line 10cm each. Pictured above; Then lift the presser lever, and prepare for the next step of sewing.

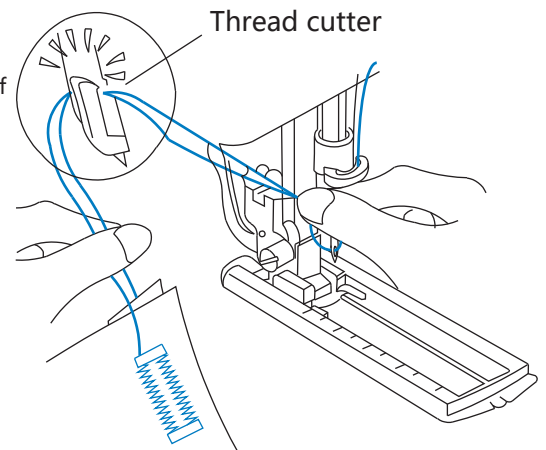
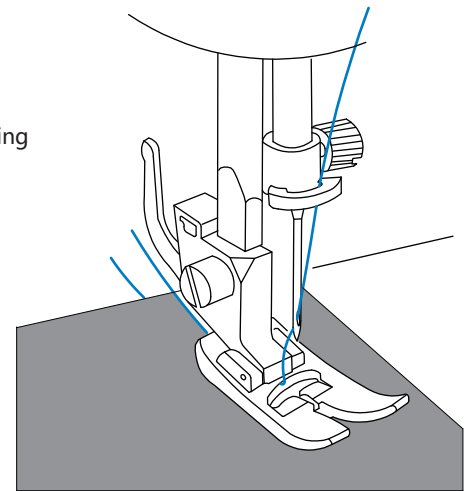
12. Sewing



Attention !

1. When operating the machine, please pay attention to the position of the needle and do not touch it with your hands. Any moving parts, such as needles and handwheels, that could otherwise cause injury.
2. When sewing, do not pull the cloth too hard, otherwise it will lead to bending or broken needle.
3. Do not adjust the pattern wheel while sewing.

1. Select the pattern to be sewn. (See instructions on page P7)
2. Adjust the thread tension according to the tension of the stitches after sewing. (See instructions on page P15)
3. Place the fabric under the presser foot, then turn the handwheel counterclockwise to place the needle at the start of sewing.
4. Move the lower presser foot lever and lower the presser foot, you can sew a few stitches by hand first to check whether there is any error such as threading. When there is no error, the sewing machine can be powered on.
5. Press the power switch to "1" (on) side to energize the machine, and set the speed adjustment switch to "SLOW" (SLOW) to start sewing. If use foot switch; Turn the speed control switch to "OFF" (OFF), step on it with your foot, and the machine can sew.
6. By holding the fabric with your hand, you can correct the sewing direction of the fabric. If it is a corner, you can first adjust the speed adjustment switch to "STOP" then turn the fabric to the angle you need, and then adjust the speed adjustment switch to "SLOW" (slow speed), and then sew (See instructions on page P16).
7. If you finish sewing, you just need to turn the speed adjustment switch to "STOP" and the machine will stop sewing. Or when you use the foot pedal, just lift your foot and stop pressing the foot switch, and the machine will stop sewing.
8. When finished sewing, you can pull out the top and bottom threads, and cut the threads with the thread cutter at the front of the machine. (As shown on the right)

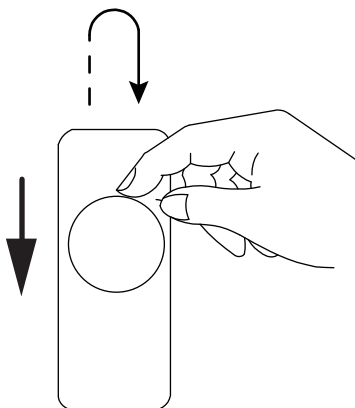


13. Reverse sewing

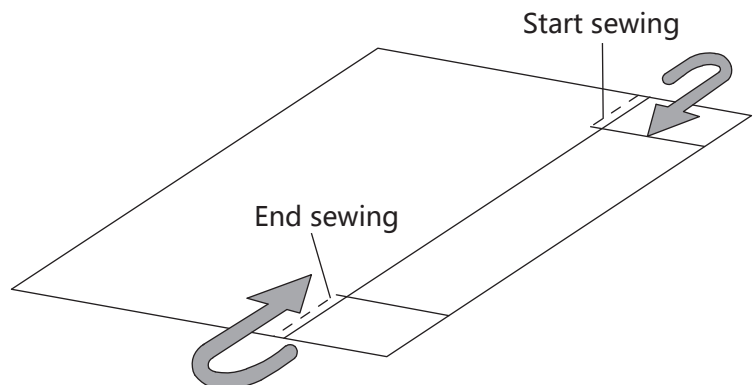


Attention !

When operating, please pay attention to the needle to avoid bruising your hands.



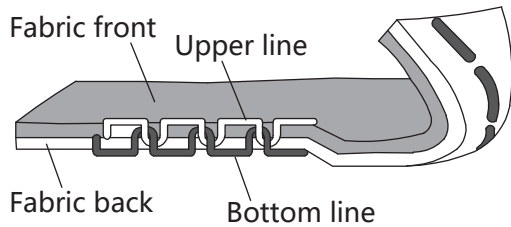
1. When the machine is sewing, you can press the "forward/reverse sewing adjuster" to change the sewing direction. When the hand is released, the machine will automatically return to the forward sewing state.



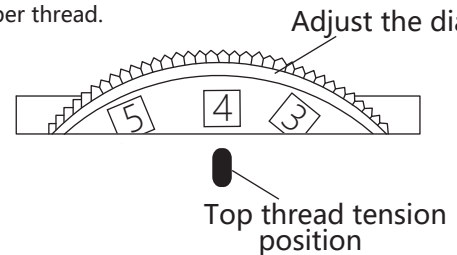
2. At the beginning of sewing, you can start the reverse sewing; Or at the end of sewing, you can start the reverse sewing to reinforce the sewing effect.

14. Upper thread tension adjustment

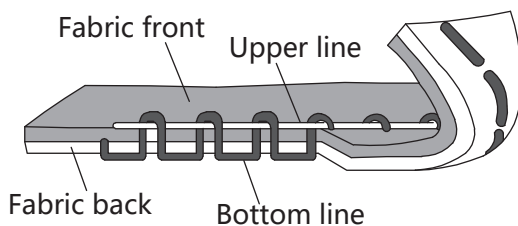
- 1** For the correct tension, the intersection of the top and bottom threads is in the middle of the cloth.



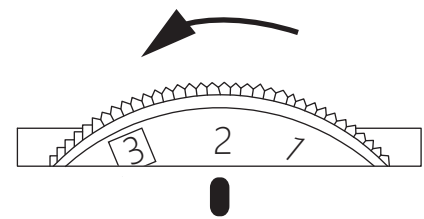
The knob here is the tension adjustment knob. The basic upper thread tension of the machine is set to 4, and the user can adjust it according to the specific situation; the larger the number, the greater the tension of the upper thread, and the smaller the number, the smaller the tension of the upper thread.



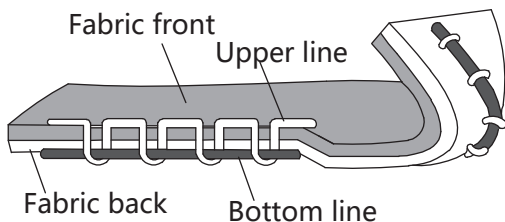
- 2** When the upper thread tension is too tight, adjust the upper thread tension and rotate to a smaller value.



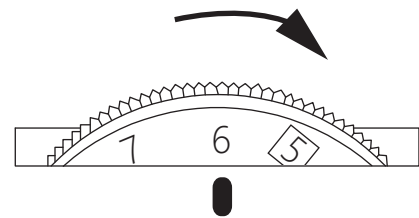
The knob turns to the left



- 3** When the upper thread tension is too loose, adjust the upper thread tension and rotate to a larger value.



The knob turns to the right



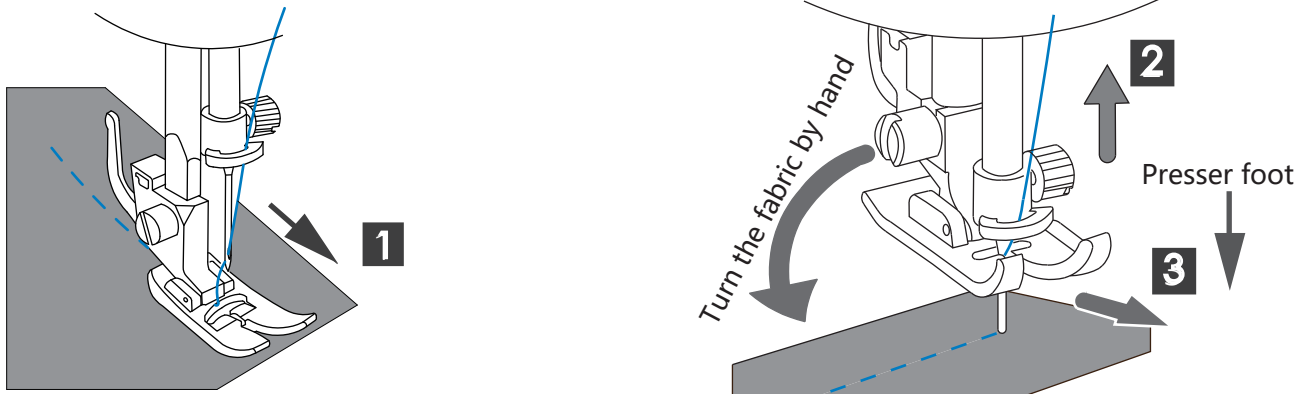
- 4** When sewing serrated patterns, the upper thread tension is usually lower than the tension of straight sewing, and the sewing effect is better.

15. Selection of thread and needle

Needle typ (HAX1)	Thread typ
number 11	number60/80/90
number 14	number50/60/80
number 16	number50/60

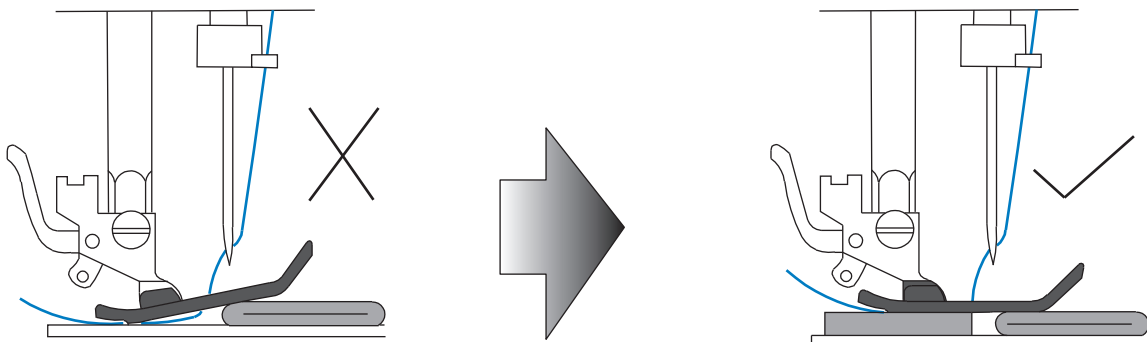
- ★ The sewing machine purchased has been equipped with HAX1.14 needle.
- ★ The smaller the line number, the thicker the line; The larger the needle number, the thicker the needle.
- ★ When sewing, first perform trial sewing by manually turning the handwheel, and observe Needle punching effect and conveying condition, and then machine sewing.
- ★ If the fabric, thread, and needle are not selected correctly, the needle may bend or break; in addition, the stitching may be uneven or skip stitches.

16. Change sewing direction



- 1** When the stitch reaches the cloth corner, please STOP the sewing machine, turn the speed adjustment switch to "STOP", keep the needle in the next needle position (needle in the cloth).
- 2** Raise the presser foot lever, then turn the fabric (turn the fabric with the needle as the center axis) to the proper position as required.
- 3** Lower the presser foot lever, then start sewing, set the speed switch to "SLOW" and continue sewing.

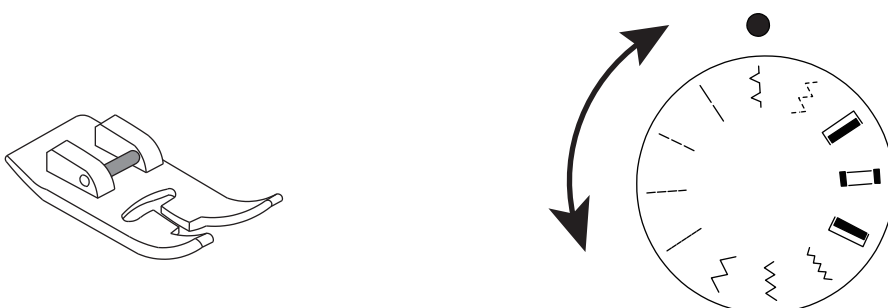
17. Sewing method of thick material



- 1** When sewing thick material, try to sew with foot switch.
- 2** When sewing thick material, the needle is difficult to plunge in, sometimes it will be stuck, try to use the hand wheel to sew, if the hand wheel sewing, it is difficult to Pierce the cloth, it is best to give up sewing.
- 3** When sewing thick materials, the situation shown in the above picture will occur. There is a height difference between the front and rear of the presser foot (the front end of the presser foot is raised and the rear end is dropped). This situation will cause the fabric to not advance; this sewing should be abandoned, and the solution is as above. As shown in the picture, place the same padding at the back end of the fabric on the front, and then sew.

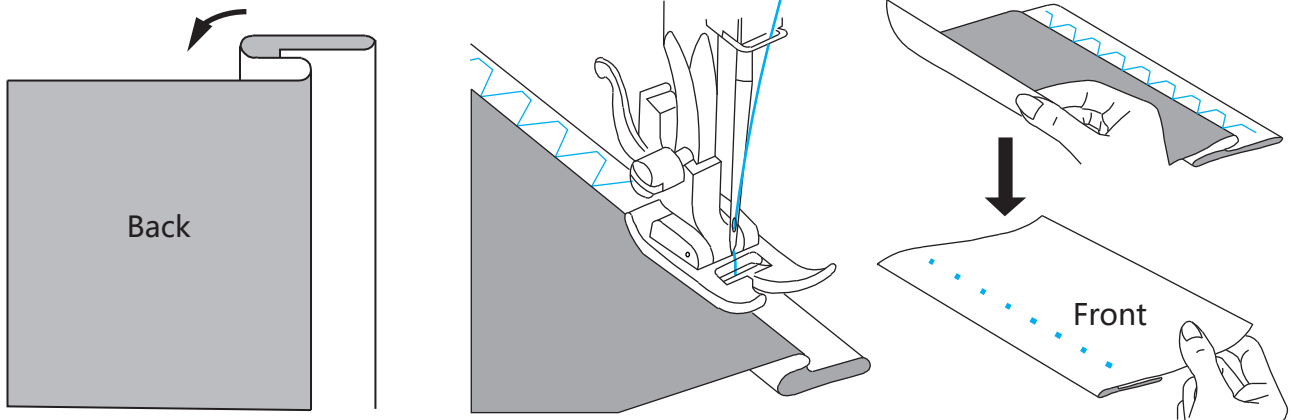
18. Blind needle sewing method

 Suitable for frills such as curtains, pants, skirts...etc.



Blind seam hem before the preparation work, install the presser foot; Choose good patterns.

The sewing method is as follows:



- 1** Fold the fabric so the back is facing up as shown.
- 2** Place the fabric at the foot of the press and turn the handwheel in your direction until the needle drops to its lowest point and the left toe of the stitch must be sewn right into the folded fabric.
- 3** After sewing, turn the fabric back to the front, and it is not easy to see the lines after sewing.

19. Buttonhole sewing

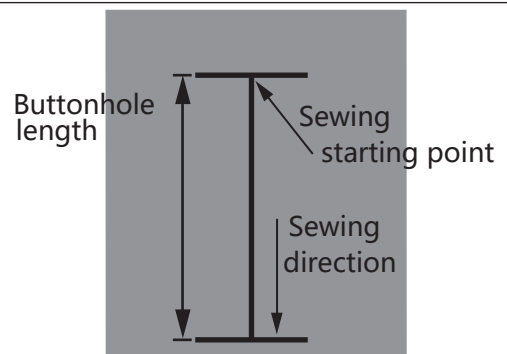


Attention !

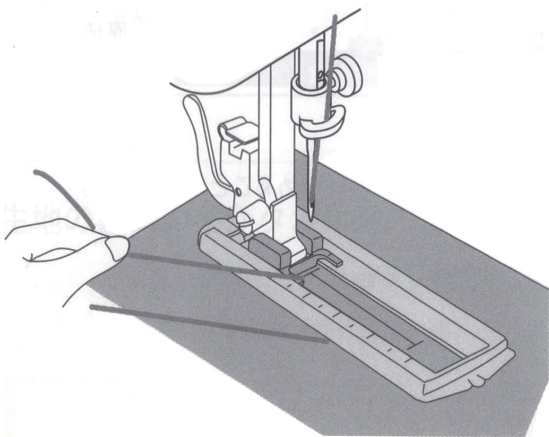
1. To do this, you need to set the power switch to "off" first.
2. When operating, please pay attention to the needle to avoid bruising your hands.

Presser feet for sewing parts	Pattern shape
<p>Buttonhole presser foot</p>	

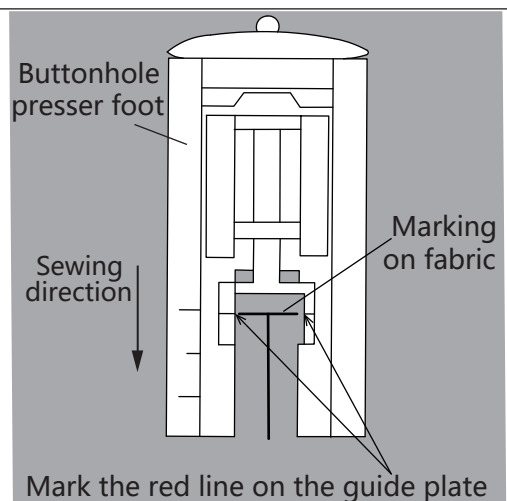
Before sewing buttonholes, replace the presser foot designed for sewing buttonholes.



1. Determine the length of the button hole according to the size of the button and the type of fabric, and make a mark on the fabric; as shown on the left, make a mark on the fabric.



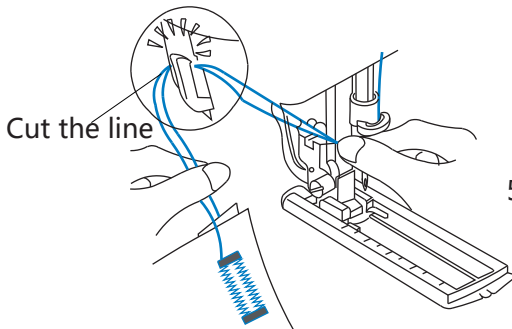
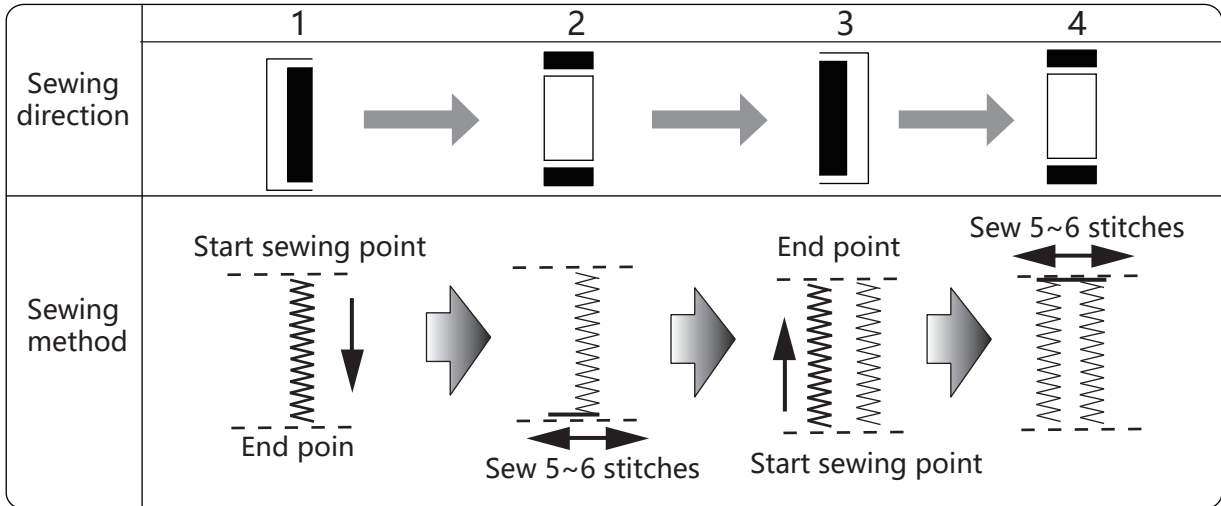
2. To install the buttonhole presser foot, please replace the presser foot according to the installation procedure on page P8.



3. To place the fabric, first align the front end of the guide pressing foot with the button mark on the cloth, and then lower the pressing foot lever. Do not put the needle into the cloth, otherwise the expected effect cannot be achieved.

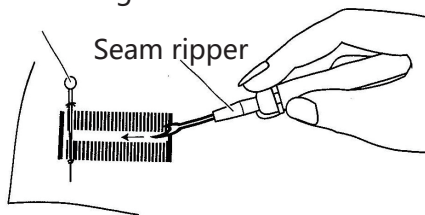
4. To start sewing, follow these steps:

- 4.1 Turn the pattern adjustment plate, select "button hole pattern 1", pinch the top thread, start the sewing machine to start sewing, from the beginning to the end of sewing, stop the sewing machine, cut the top thread.
- 4.2 Turn the pattern adjustment dial, select "Buttonhole pattern 2", start the sewing machine to sew 5~6 stitches, end the sewing, and turn off the sewing machine.
- 4.3 Turn the pattern adjustment dial, select "Buttonhole pattern 3", start the sewing machine to start sewing end the sewing, and turn off the sewing machine.
- 4.4 Turn the pattern adjustment dial, select "Buttonhole pattern 4," start the sewing machine to sew 5~6 stitches, end the sewing, and turn off the sewing machine.



5. Raise the "Presser Foot Lever", take out the sewn fabric, and cut the thread with the "Sewing Knife".

Positioning the needle

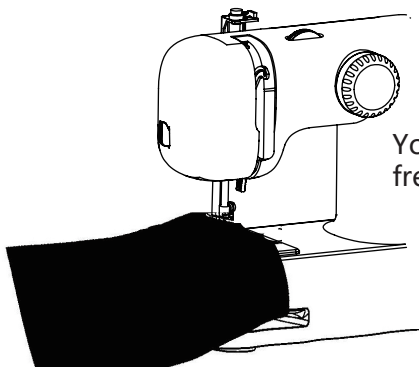


Attention !

When operating, please pay attention to the seam ripper to avoid bumping your hands.

6. Insert a positioning needle along a fixed stitch at the end of the buttonhole stitch to prevent the stitches from being cut; use a seam ripper to cut the thread toward the positioning needle to open the buttonhole.

20. Sewing of cuffs and trouser legs



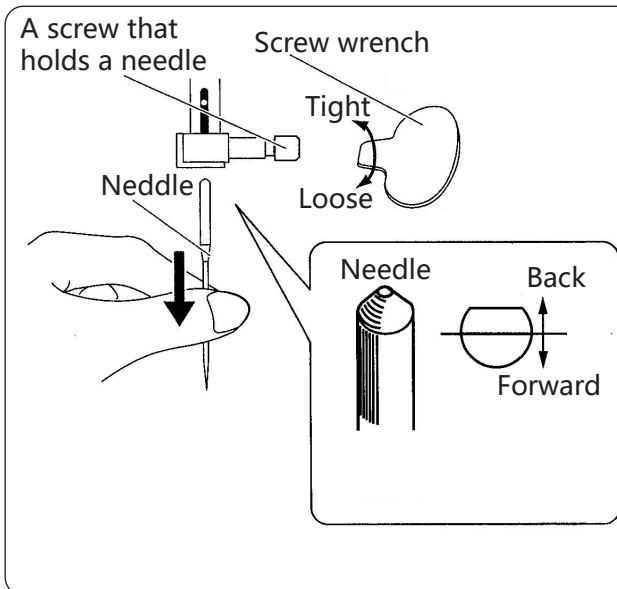
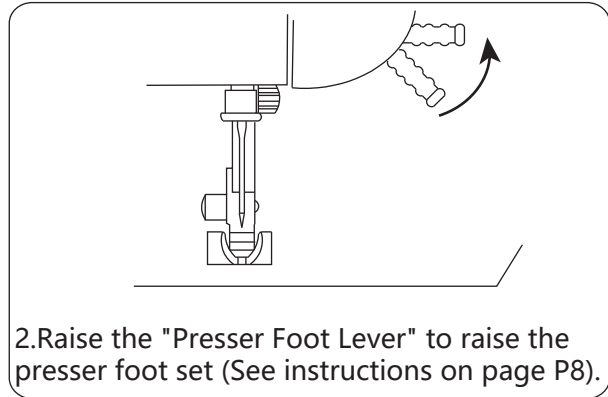
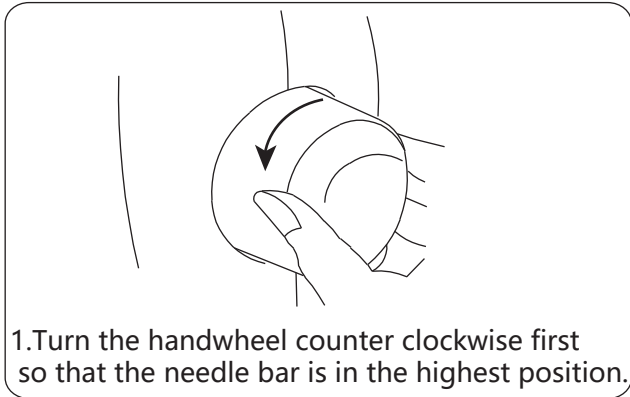
You can insert the cuffs and pant legs directly into the machine's free arm from the left, and sew by rotating the cuffs and pant legs.

21. Change needle

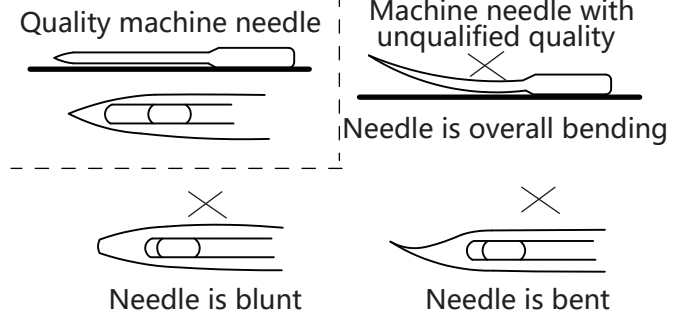


Attention !

1. Remove the AC adapter from the outlet.
2. When operating, please pay attention to the needle to avoid bruising your hands.



3. Remove the old needle by turning the screw counterclockwise with a screw wrench.
4. Insert the needle all the way to the bottom, and the flat surface of the new needle is behind (as shown in the left picture); Turn the needle retaining screws clockwise with a screw wrench.

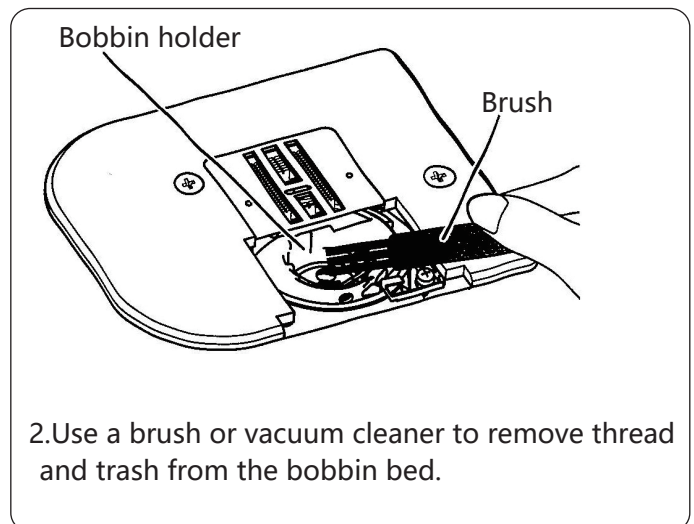
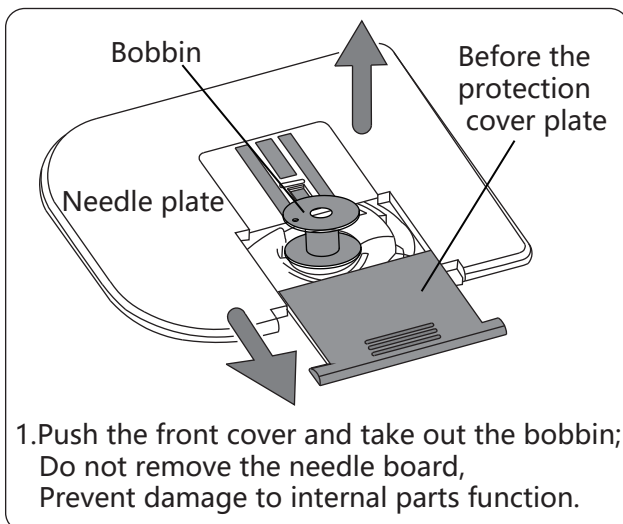


Attention !

22. Daily maintenance



1. To do this, you need to set the power switch to "off" first
2. When operating, please pay attention to the needle to avoid bruising your hands.



23. Faults and solution

If the sewing machine is not functioning properly, please check the following possible problems before requesting service; most problems can be solved by yourself.

If the problem is still not resolved, please contact an authorized Butterfly brand home sewing machine dealer or technical service center.

Malfunction	Cause	Solution
sewing machine	Is the AC adapter plugged in for poor contact?	Reinsert the AC adapter to ensure power connection
Does not work during sewing	Thick fabric cannot penetrate	You can turn the speed governor to "OFF" and turn it counterclockwise by hand Turn the handwheel
Don't feed	The hand is pressing the fabric too tightly	Easy to take the fabric, auxiliary feeding
	Presser foot not lowered	Lower the "Presser Foot Lever"
	The length of the buttonhole does not match the pattern	Reselect matching figure
Needle break	Fine needle for thick material	Choose the right needle
	The needle is not properly installed	Reinstall the needle
	The surface line is incorrect	Confirm the machine threading steps, and re-thread the machine
	Incorrect selection of needle and thread	Select the model of needle and thread
Large rotating load, Sounds great	Too much lint or trash on the shuttle bed	Clean the machine
	Debris stuffing feed teeth	Cleaning the machine feed teeth
Fabric wrinkled	Needle blunt	Replace the needle with a new one
	Inappropriate thread tension	Re - adjust the surface line tension, adjust the rotary plate
	Fabric too thin	Add thin backing paper
	The upper and lower threads used are very different from the fabric	The upper line and the bottom line shall be of the same quality
Top thread breaks	The path of the upper line is incorrect	Confirm the machine threading steps, and re-thread the machine
	Upper thread tension is too high	Turn the upper thread tension adjustment dial to the small number
	The initial sewing speed is too fast	Appropriately reduce the sewing speed
	Improper fit of the needle	Re-selection of needle and thread type
Lower thread breaks	The bobbin is not fully inserted into the shuttle	Reinstall the bobbin
	Bobbin is wound with thread	Arranging the thread on the bobbin
	Bobbin does not run smoothly in bobbin bed	Check the bobbin for damage
	The bottom line is loose	Check the lower thread exits the bobbin correctly
	The drawn thread is not wound correctly in the groove of the bobbin	Correct bobbin outlet
Missing stitches	Top thread tension is too high	Turn the upper thread tension adjustment dial to the small number
	Needle blunt	Change new needle
	Incorrect selection of needle and thread	Re-selection of needle and thread type
	Too much lint or trash on the shuttle bed	Clean the machine
	Needle is inserted incorrectly	Reinstall the needle
stitches too loose or uneven	The upper line path is incorrect	Confirm the machine threading steps, and re-thread the machine
	Top thread tension is too high	Turn the upper thread tension adjustment dial to the small number
	The bottom line is not in the rotary bobbin groove	Correct bobbin outlet

Maintenance status register column

Maintenance date			
Maintenance situation			
Handler			



Customer comment column

Customer signature: _____

Please fill in the card carefully when purchasing, and the dealer will stamp it, and send it back to the customer service department of the company within 30 days. The dealer will establish user profile for you, for your product tracking service.

Please return the card to our customer service department

Please send the feedback card to: Customer Service Department,

No. 263, Shitai Road, Baoshan District, Shanghai
